



10天7晚 欧洲传说

巴黎, 苏黎世, 卢塞恩, 莱茵瀑布, 滴滴湖, 海德堡,
法兰克福, 科隆, 布鲁塞尔, 阿姆斯特丹

Tour Code: 10 EGS



德国



荷兰



比利时



法国



瑞士



苏黎世



咕咕钟工厂



海德堡大学



大广场



滴滴湖



海德堡城堡



莱茵瀑布



精简行程



遗产



文化



家庭



风景



休闲



购物

第一天

吉隆坡 - 法兰克福

(机上用餐)

(15小时++)

第二天

法兰克福 - 滴滴湖 (300公里 3小时40分钟) - 海德堡 (215公里 2小时30分钟)

(午/晚餐)

- 滴滴湖 (步行游览)
- 咕咕钟工厂 (参观)
- 海德堡大学 (路过经过)
- 海德堡城堡 (路过经过)
- 豪普特街 (步行游览)

第三天

海德堡 - 科隆 (260公里3小时) - 阿姆斯特丹 (265公里3小时)

(早/午餐/-)

- 科隆大教堂 (步行浏览)

第四天

阿姆斯特丹

(早/-/晚餐)

- 桑斯安斯村 (步行浏览)
- 乘坐运河游船 (包含船票)
- 钻石工厂 (参观)
- 达姆广场 (步行浏览)
- 红灯区 (步行浏览)

第五天

阿姆斯特丹 - 布鲁塞尔 (205公里 2小时30分钟) - 巴黎 (310公里 3小时40分钟)

(早/午餐/-)

- 原子塔 (拍照)
- 大广场 (路过经过)
- 旧皇宫 (步行浏览)
- 市政厅 (步行浏览)
- 撒尿小童像 (步行浏览)

第六天

巴黎

(早/午/晚餐)

- 乘坐塞纳河游船 (包含船票)
- 埃菲尔铁塔 (包含第二层门票)
- 凯旋拱门 (拍照)
- 香榭丽舍大道 (路过经过)
- 巴黎大小皇宫 (路过经过)
- 协和广场 (路过经过)
- 巴黎荣军院 (路过经过)
- 巴黎歌剧院 (路过经过)
- 军事博物馆 (路过经过)
- 卢浮宫 (拍照)
- 玛德莲教堂 (路过经过)
- 老佛爷商场

第七天

巴黎 - 苏黎世

(664公里6小时40分钟)

(早/午餐/-)

- 开车前往苏黎世

科隆

- **科隆大教堂** - 科隆是德国最古老的城市之一。境内最壮观的哥特式风格科隆大教堂拥有世界上最大的教堂门面，1996年被指定为世界文化遗产。它是科隆的主要标志，非官方象征。

阿姆斯特丹

- **红灯区** - 阿姆斯特丹的红灯区位于老城区。在红灯区内，一条条窄小的巷道充斥着情色文化的各种表征，穿着暴露的「橱窗女郎」在她们谋生的橱窗内搔首弄姿，情趣商店的各种商品毫不遮掩的展示在街道旁，这些巷弄里无时无刻弥漫着一种诡异的气氛，来到这里满足好奇心的同时，也请特别小心注意自己人身及财物的安全。
- **达姆广场** - 被称为阿姆斯特丹的心脏地带的达姆广场，是阿姆斯特丹历史的发祥地，是荷兰最具盛名的广场。广场上的战争慰灵碑，为纪念在两次大战中牺牲者而建。
- **桑斯安斯村** - 开放式的保留区和博物馆。古老的建筑生动描绘了17、18世纪的荷兰生活。真实的房子，古老的造船厂，制作木鞋的表演，还有风车，每年吸引着成千上万的游客。

布鲁塞尔

- **原子塔** - 是为1958年布鲁塞尔世界博览会而建的金属结构的纪念性建筑物，André Waterkeyn设计，高102米，包括9个直径18米的球体，与连接圆球的钢管构成相当于放大1650亿倍的α铁的立方体晶体结构。目前(2008年)三个球体向游客开放，顶部的球体提供观察布鲁塞尔全景的观景地。
- **大广场** - 是西欧比利时的首都布鲁塞尔的中心广场；1998年联合国教科文组织将布鲁塞尔大广场列入世界文化遗产。
- **市政厅** - 乃始建于中世纪的哥特式建筑，坐落于比利时布鲁塞尔大广场中间。这座歌德式建筑物是布鲁塞尔的城市地标。建筑物分两期建造，规模较大的左半部建于1402年，1455年建造右半部时，由Philippe Bon主持建造了塔楼和96米高的尖塔。
- **撒尿小童像** - 是比利时首都布鲁塞尔的市标。这座闻名于世的小男孩铜像是一座落于市中心步行区的雕像及喷水池。这个五岁小孩身材的雕像不大(身高约53厘米)，但有将近四百年的历史。

巴黎

- **埃菲尔铁塔** - 矗立在法国巴黎的战神广场，是世界著名建筑，也是法国文化象征之一，巴黎城市地标之一，也是巴黎最高建筑物，于1889年建成，得名于设计它的著名建筑师、结构工程师古斯塔夫·埃菲尔。铁塔设计新颖独特，是世界建筑史上的技术杰作，是法国巴黎的重要景点和标志。
- **凯旋门** - 位于法国巴黎的戴高乐广场中央，是拿破仑为纪念1805年打败俄奥联军的胜利，于1806年下令修建而成的。拿破仑被推翻后，凯旋门工程中途辍止。波旁王朝被推翻后又重新复工，到1836年终于全部竣工。
- **香榭丽舍大道** - 香榭丽舍大道是巴黎一条著名的大道，位于城市西北部的第八区。它被誉为巴黎最美丽的街道。“香榭丽舍”原意是希腊神话中圣人及英雄灵魂居住的冥界。



卡贝尔廊桥和八角型水塔



狮子纪念碑



豪普特街

第八天

苏黎世 - 卢塞恩 (52公里40分钟) - 苏黎世 (早/-/-)

- 狮子纪念碑 (拍照)
- 卡贝尔廊桥和八角型水塔 (拍照)
- 琉森老城区 (自由活动)

第九天

苏黎世 - 莱茵瀑布 (48公里36分钟) - 苏黎世 (早/-/-)


- 莱茵瀑布 (拍照)

第十天

抵达吉隆坡

★★★★★ 旅游亮点 ★★★★★

- ✓ 2个著名游船：运河游船 & 塞纳河游船
- ✓ 科隆大教堂 - 联合国教科文组织世界遗产
- ✓ 参观第二层欸菲尔铁塔
- ✓ 老佛爷商场

★★★★★  ★★★★★

4★ 酒店或同级酒店 7晚

- ✓ 海德堡 x 1晚
- ✓ 巴黎 x 2晚
- ✓ 阿姆斯特丹 x 2晚
- ✓ 苏黎世 x 2晚

★★★★★  ★★★★★

- ✓ 7 早餐 / 5 午餐 / 3 晚餐
- ✓ 热早餐, 西餐&中餐为主

★★★★★ 餐食特色 ★★★★★



巴黎 - 法國蝸牛



布鲁塞尔 - 青口贝



滴滴湖 - 德国烤猪脚

- 协和广场 - 建于1757年，是一个非常美丽的广场，最初是献给路易十五的。协和广场位于香榭丽舍大道中段，从这里可以环顾大部份的巴黎美景：香榭丽舍大道、凯旋门、杜伊勒里公园、卢浮宫等等。法国大革命期间，这里曾被称为“革命广场”，是行刑的场所，国王路易十六及王后、罗兰夫人、罗伯斯庇尔都在此被送上了断头台。1795年，这里改名为“协和广场”。
- 巴黎荣军院 - 是路易十四在1676年建成的，包括一座教堂和几个院子，用来安置战争中伤残的军人，后来做过医院、收容所、修道院、军事学院。现在仍属于法国军方，其中一部分成为法国军事博物馆，这是世界上展品最丰富的军事博物馆之一。另外还有收藏军事堡垒模型的立体地图博物馆和献给二战军人的解放勋章博物馆。
- 玛德莲教堂 - 位于巴黎8条主要大道交会处的玛德莲广场，加上巨大庄严的外观，成为巴黎最知名的建筑代表之一。

琉森

- 狮子纪念碑 - 特尔·托瓦尔森设计的。这是为了纪念在1792年8月10日，为保护法国国王路易16世家族的安全，而全部牺牲的786名瑞士雇佣兵。在石像的上方刻有拉丁文“HELVETIORUM FIDEI AC VIRTUTI”，意为“献给忠诚和勇敢的瑞士”。下方刻字的第一行是“DIE X AUGUSTI II ET III SEPTEMBRIS MDCCXCII”，表示惨剧发生的时间：1792年的八月十日和九月二，三日。狮子右前爪的两面盾牌上分别有象征瑞士的十字徽章和法国王室的香根鸢尾。马克·吐温对这座石像评价很高，说它是世界上最感动人的石像。
- 卡贝尔廊桥和八角型水塔 - 因为桥的北岸有一座聖彼德教堂，因此叫作教堂桥。在廊桥的裡面有一百二十幅於十七世纪時所绘画关于琉森历史的画。不幸地，卡贝尔桥的大部份於1993年因撞船意外發生的灾中烧毁，事后很快得以重建，回復原來的样貌。這條桥是欧洲现在存最古老的木桥，是琉森的地标，也是瑞士的一大旅遊景點。

莱茵瀑布

- 莱茵瀑布 - 莱茵瀑布瀑布位于瑞士北部边缘，是欧洲最强大、最壮观的瀑布。

滴滴湖

- 滴滴湖 - 滴滴湖是德国西南部巴登-符滕堡州黑森林南部的一个湖泊，据说得名于罗马皇帝提图斯。它的面积为1.3 km²，平均深度为20 米。蒂蒂湖由 Feldberg 冰川形成，在更新世，冰碛物挖掘形成了今天的湖岸。这个湖泊的出口，海拔840 米，是 Gutach河（下游称为 Wutach河）。在其北岸是同名的温泉镇，今天是蒂蒂湖-新城城市的一部分。
- 咕咕钟工厂 - 生產自德國黑森林地區，与同一地区出产的拉克施尔德钟齐名天下。它的内部有设计精巧的齿轮装置，每到半点和整点，钟上方的小木门就会自动打开，并且出现一个会报时的布谷鸟，发出悦耳的“咕咕”的叫声。因此，也稱作咕咕鐘。布谷鸟钟的历史记载可以追溯到17世纪中叶，而最早的布谷鸟钟出现于1730年到1750年之间的黑森林地区，那时的黑森林地区钟表制造业已相当盛行，許多家庭都以造表为生。19世纪后半叶起，布谷鸟钟成为世界闻名的纪念品和外国人眼中德国的一种标志。

海德堡

- 海德堡城堡 - 海德堡城堡位於德國的南部，是德國現今著名的廢墟城堡和里程碑式建築的海德堡，城堡廢墟是阿爾卑斯山以北最著名的文藝復興建築。城堡位於80米高的王座山坡北部，可以观赏老城区的景色。
- 豪普特街 - 海德堡市老城区的主街为豪普特街，与内卡河平行，全长约1.6公里，是欧洲最长的商业步行街。这条街的西端为俾斯麦广场，东端为集市广场。海德堡较主要的历史建筑和景点也都集中于步行街沿线一带。

旅游资讯

欧洲



货币 	欧元: (EUR)	信用卡 致电信用卡中心，以延长你的信用卡额度 * 许多信用卡在欧洲通行。
货币兑换率 	1欧元 : 4.7令吉	拨号代码 法兰克福 : +49 69 阿姆斯特丹 : +45 巴黎 : +33 1 琉森 : +41 41 布鲁塞尔 : +32 2 苏黎世 : +41 43/44
电压 	230 伏特 50 Hz 频率	插头 两个圆脚头 *请自带多功能插座
时差 	标准时相差慢马来西亚时间6小时	行李托运 每人只限携带一件不超过7公斤的手提行李上机，以及托运行李不超过20公斤
气候 	<input type="checkbox"/> 春季 <input type="checkbox"/> 夏季 <input type="checkbox"/> 秋季 <input type="checkbox"/> 冬季 3月 - 5月 6月 - 8月 9月 - 11月 12月 - 2月 10°C- 25°C 28°C- 37°C 8°C- 20°C -5°C- 11°C	
飞机型号 	A330 B737- 800 B757	

出发日期：

航班行程：

团费：

机场税及燃油附加费：

小费：

旅行社代收费：

签证：

旅行保险：

总数：

Travel Agent:



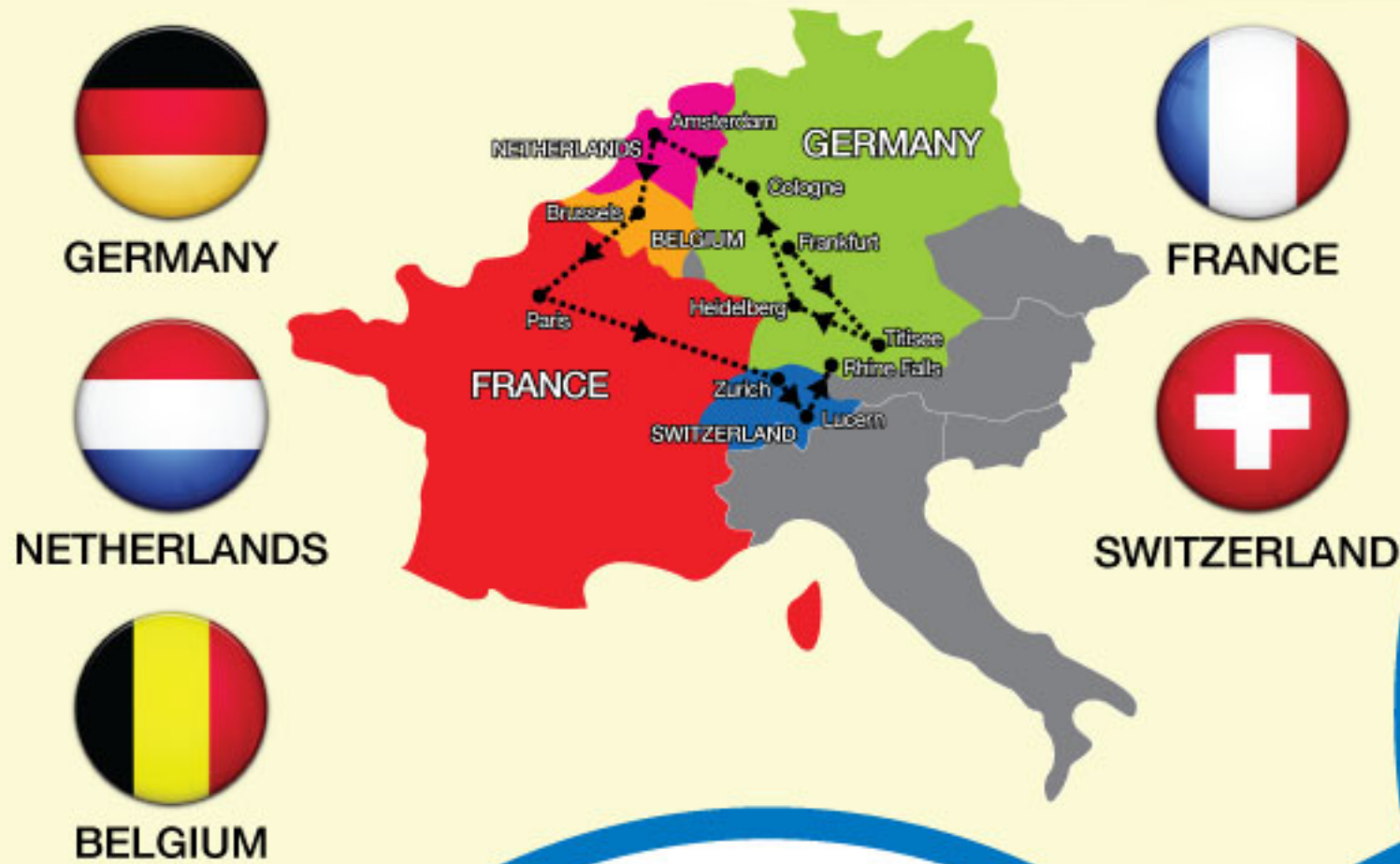


10D7N

EUROPE LEGEND

FRANKFURT, TITISEE, HEIDELBERG, COLOGNE, AMSTERDAM,
BRUSSELS, PARIS, ZURICH, LUCERNE, RHINE FALL

Tour Code: 10 EGS



Zurich



Cuckoo Clock
Factories



Oldest
University



Grand Place



Lake Titisee



Massive Ruins Castle



Rhine Fall



SCHEDULE



HERITAGE



CULTURE



FAMILY



SCENIC



LEISURE



SHOPPING

D1

KUALA LUMPUR – FRANKFURT
(15H++) (MOB)

D2

FRANKFURT – TITISEE (300KM 3H40M)
– HEIDELBERG (215 KM 2H30M) (L/D)

- Lake Titisee (Walking Tour)
- Cuckoo Clock Factories (Visit)
- Oldest University (Drive Pass)
- Massive Ruins Castle (Drive Pass)
- Medieval Town (Walking Tour)

D3

HEIDELBERG – COLOGNE (260KM 3H)
– AMSTERDAM (265KM 3H) (B/L/-)

- Cologne Cathedral (Walking Tour)

D4

AMSTERDAM (B/-/D)

- Zaanse Schans (Walking Tour)
- Canal Cruise (Ticket Included)
- Diamond Factory (Visit)
- Dam Square (Walking Tour)
- Red Light District (Walking Tour)

D5

AMSTERDAM – BRUSSELS (205KM 2H30M) **– PARIS** (310KM 3H40M) (B/L/-)

- Atomium (Photo Stop)
- Grand Place (Drive Pass)
- Old Palace (Walking Tour)
- City Hall (Walking Tour)
- Manneken Pis (Walking Tour)

D6

PARIS (B/L/D)

- Seine River Cruise (Ticket Included)
- 2nd Level Eiffel Tower (Entrance Included)
- Arch of Triumph (Photo Stop)
- Champs Elysees (Drive Pass)
- Grand & Petit Palais (Drive Pass)
- Place de la Concorde (Drive Pass)
- Les Invalides (Drive Pass)
- Opera (Drive Pass)
- Military Academy (Drive Pass)
- Louvre Museum (Photo Stop)
- La Madeleine (Drive Pass)
- Lafayette Shopping

D7

PARIS – ZURICH
(664KM 6H40M) (B/L/-)

- Scenic Drive to Zurich

COLOGNE

- **Gothic Cathedral of Cologne** - One of the oldest cities in Germany. Within the most spectacular Gothic cathedral of Cologne has the world's largest church facade, 1996 has been designated as World Heritage Site. It is the main symbol of Cologne, unofficial symbol.

AMSTERDAM

- **Red Light District** - A red-light district is a part of an urban area where there is a concentration of prostitution and sex-oriented businesses, such as sex shops, strip clubs, adult theaters, etc. The term originates from the red lights that were used as signs of brothels. There are areas in many big cities around the world which have acquired an international reputation as red-light districts.
- **Dam Square** - Dam Square, or simply the Dam is a town square in Amsterdam, the capital of the Netherlands. Its notable buildings and frequent events make it one of the most well-known and important locations in the city.
- **Zaanse Schans** - With its traditional houses, windmills, warehouses and workshops, the historic village of Zaanse Schans offers a preserved glimpse of what it was like to live in the Netherlands in the 18th and 19th centuries.

BRUSSELS

- **Atomium** - The Atomium is a building in Brussels originally constructed for Expo 58, the 1958 Brussels World's Fair. Designed by the engineer André Waterkeyn and architects André and Jean Polak.
- **Grand Place** - The Grand Place or Grote Markt is the central square of Brussels. The square is the most important tourist destination. It is a UNESCO World Heritage Site.
- **City Hall** - The City Hall of Brussels is a masterpiece of the Gothic civil architecture of the 15th century. The wealth inside also makes it one of the most luxurious city halls of the country. It possesses an important artistic and historic heritage (paintings, sculptures, tapestries).
- **Manneken Pis** - Manneken Pis is a landmark small bronze sculpture in Brussels, depicting a naked little boy urinating into a fountain's basin. It was designed by Hiëronymus Duquesnoy the Elder and put in place in 1618 or 1619.

PARIS

- **Eiffel Tower** - The Eiffel Tower is an iron lattice tower located on the Champ de Mars in Paris. It was named after the engineer Gustave Eiffel, whose company designed and built the tower. Erected in 1889 as the entrance arch to the 1889 World's Fair, it was initially criticised by some of France's leading artists and intellectuals for its design, but has become both a global cultural icon of France and one of the most recognizable structures in the world. Once the tallest structure in the world, the Eiffel Tower is probably Europe's best known landmark and Paris's most famous symbol.
- **Arch of Triumph** - is one of the most famous monuments in Paris. The Arc de Triomphe (in English: "Triumphal Arch") honours those who fought and died for France in the French Revolutionary and the Napoleonic Wars, with the names of all French victories and generals inscribed on its inner and outer surfaces. Beneath its vault lies the Tomb of the Unknown Soldier from World War I.
- **Champs Elysees** - Is a boulevard in the 8th arrondissement of Paris, which runs between the Place de la Concorde and the Place Charles de Gaulle, where the Arc de Triomphe is located. It is famous for its theatres, cafés and luxury shops, and for the military parade that takes place each year on the avenue on 14 July to celebrate Bastille Day.



Wooden Chapel Bridge



Lion Monument



Medieval Town

D8

ZURICH – LUCERNE (52KM 40M) –
ZURICH (B/-/-)

- Lion Monument (Photo Stop)
- Wooden Chapel Bridge (Photo Stop)
- Old Town (Free & Easy)

D9

ZURICH – RHINE FALL (48KM 36M) –
ZURICH (B/-/-)

- Rhine Fall (Photo Stop)

D10

ARRIVAL KUALA LUMPUR



HIGHLIGHTS



- ✓ 2 Famous Cruise: Canal Cruise & Seine River Cruise
- ✓ Cologne Cathedral – UNESCO World Heritage
- ✓ Entrance to 2nd floor of Eiffel Tower
- ✓ Lafayette Shopping



4 ★ HOTEL OR SIMILAR (7 NIGHTS)

- ✓ Heidelberg x 1 Night
- ✓ Amsterdam x 2 Nights
- ✓ Paris x 2 Nights
- ✓ Zurich x 2 Nights

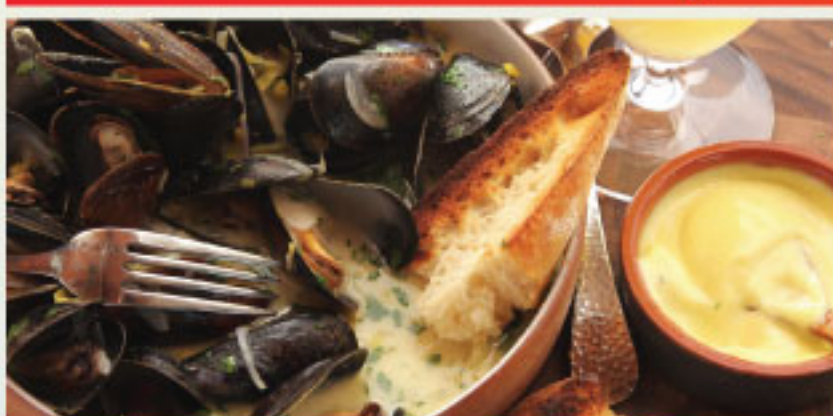


- ✓ 7 Breakfasts / 5 Lunch / 3 Dinners
- ✓ Hot Breakfasts, Mix Western Meals & Chinese Meals

★ ★ ★ ★ ★ MEALS SPECIALTIES ★ ★ ★ ★ ★



French Cuisine with Escargot



Mussels Meals



German Lunch with Pork Knuckle

- **Place de la Concorde** - Is one of the major public squares in Paris, France. Measuring 8.64 hectares (21.3 acres) in area, it is the largest square in the French capital. It is located in the city's eighth arrondissement, at the eastern end of the Champs-Élysées.
- **Les Invalides** - Is a complex of buildings in the 7th arrondissement of Paris, France, containing museums and monuments, all relating to the military history of France, as well as a hospital and a retirement home for war veterans, the building's original purpose.
- **La Madeleine** - Is a Roman Catholic church occupying a commanding position in the 8th arrondissement of Paris. The Madeleine Church was designed in its present form as a temple to the glory of Napoleon's army.

LUCERNE

- **Lion Monument** - The Lion Monument, or the Lion of Lucerne, is a sculpture in Lucerne, Switzerland, designed by Bertel Thorvaldsen and hewn in 1820–21 by Lukas Ahorn. It commemorates the Swiss Guards who were massacred in 1792 during the French Revolution, when revolutionaries stormed the Tuileries Palace in Paris, France. Mark Twain praised the sculpture of a mortally-wounded lion as "the most mournful and moving piece of stone in the world."
- **Wooden Chapel Bridge** - The Kapellbrücke (literally, Chapel Bridge) is a covered wooden footbridge spanning diagonally across the Reuss River in the city of Lucerne in central Switzerland. Named after the nearby St. Peter's Chapel, the bridge is unique since it contains a number of interior paintings dating back to the 17th century, although many of them were destroyed along with most of the centuries old bridge in a 1993 fire. Subsequently restored, the Kapellbrücke is the oldest wooden covered bridge in Europe, as well as the world's oldest surviving truss bridge. It serves as the city's symbol and as one of Switzerland's main tourist attractions.

RHINE FALL

- **Rhine Falls** - The Rhine Falls are Europe's mightiest waterfall. The falls are located at the northernmost edge of Switzerland.

TITISEE

- **Lake Titisee** - A lake in the southern Black Forest in Baden-Württemberg. It is said it got its name from Roman Emperor Titus. It covers an area of 1.07 km² and has an average depth of 20 m.[1] It owes its creation to the Feldberg glacier, the moraine ploughed up by which in the Pleistocene epoch nowadays forms the lake's shores. The lake's outflow, at 840 m above sea level, is the river Gutach (or as it is called farther downstream, the Wutach). On the north shore lies the spa town of the same name, today a part of the municipality of Titisee-Neustadt.
- **Cuckoo Clock Factories** - A cuckoo clock is a typically pendulum-regulated clock traditionally manufactured in the Black Forest in Germany that strikes the hours with a sound like a common cuckoo's call and often has a mechanical cuckoo that emerges with each note. The mechanism to produce the cuckoo call was installed in almost every kind of cuckoo clock since the middle of the 18th century and has remained almost without variation, until the present.

HEIDELBERG

- **Heidelberg Castle** - A famous ruin in Germany and landmark of Heidelberg. The castle ruins are among the most important Renaissance structures north of the Alps. It is located 80 metres (260 ft) up the northern part of the Königstuhl hillside, and thereby dominates the view of the old downtown.
- **Medieval Town** - The "old town" on the south bank of the Neckar, is long and narrow. The Main Street (Hauptstrasse), a mile-long pedestrian street, running the length of the old town. The town itself is a maze of historic, baroque and gabled buildings lining the river with its romantic old-town behind.

General Information

• EUROPE •



Currency 	Euro: (EUR)	Credit Card Call credit card centre to extend your credit card limit <i>* Credit Card are used widely in Europe</i>
Exchange Rate 	EUR 1 : RM 4.7	Dial Code Frankfurt : +49 69 Amsterdam : +45 Paris : +33 1 Lucerne : + 41 41 Brussels : +32 2 Zurich : + 41 43/44
Voltage 	Voltage: 230 V Frequency: 50 Hz	Power socket 2 round pin plugs <i>*Please bring a universal electric plug adapter</i>
Time Different 	6 hours behind Malaysia	Luggage allowance Each individual are entitled to check in 1 luggage of not more than 20kgs and a hand carry bag not more than 7kgs.
Weather 	<div> <input type="checkbox"/> Spring Mar - May 10°C- 25°C <input type="checkbox"/> Summer Jun - Aug 28°C- 37°C <input type="checkbox"/> Autumn Sep - Nov 8°C- 20°C <input type="checkbox"/> Winter Dec - Feb -5°C- 11°C </div>	
Aircraft Type 	<div> A330 B737- 800 B757 </div>	

Departure Date:

Flight :

Tour Fare:

Airport Tax & Fuel Surcharge:

Tipping:

Agent Collection Fee:

Visa:

Travel Insurance:

TOTAL :

Travel Agent:

